

Quantity discounts apply on multiples of the same item

## MAYCO CRACKLE GLAZES

Formulated to create patterns of cracks similar to crazing, Crackle Glazes result in a unique antique look. To highlight the cracks created in firing, antique the piece with india ink (as shown in the images below), acrylic paint, or a mineral-spirit-based woodstain. Apply a coat of the desired color to the fired piece and wipe off with a soft cloth. Crackle glazes are nontoxic, but NOT safe for food or drink containers because of their cracked surface.

See page 16 for the India Ink that we used on these tiles.

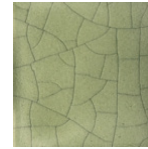
When you buy ...	<b>1-5 @</b>	<b>6-11 @</b>	<b>12+ @</b>
4oz.....	\$5.50 .....	\$4.40 .....	\$4.13
Pint .....	\$15.95 .....	\$12.76.....	\$11.96



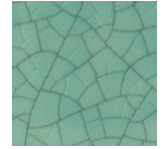
CC101M  
Transparent



CC102M  
White



CC107M  
Green Tea



CC108M  
China Sea

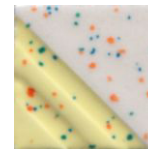
## MAYCO SPECKTA-CLEAR GLAZES

Specta-Clear glazes are clear glazes with speckles. They can be used over Stroke & Coats, Foundations, Fundamentals Underglazes and Designer Liners.

When you buy ...	<b>1-5 @</b>	<b>6-11 @</b>	<b>12+ @</b>
4 oz .....	\$5.75.....	\$4.60 .....	\$4.31
Pints.....	\$16.75.....	\$13.40 .....	\$12.56



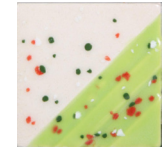
SG701  
Star Dust



SG702  
Celebration



SG703  
Autumn

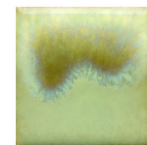


SG704  
Peppermint

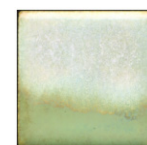
## MAYCO POTTERY CASCADES

These glazes produce special effects when used in combination with other nontoxic glazes. PC602 White intermingles with the other glazes, introducing pure white and blending with the color. PC601 Clear produces a flowing effect and allows the color of the base glaze to show unaltered – but in motion. Use them over or under any nontoxic glazes to experiment and see what you get.

When you buy ...	<b>1-5 @</b>	<b>6-11 @</b>	<b>12+ @</b>
4oz .....	\$6.95.....	\$5.56.....	\$5.21



PC601  
Clear



PC602  
White

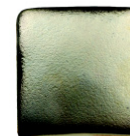
## SPECTRUM METALLIC GLAZES

These glazes are lead-free, but contain other heavy metals that may leach from surfaces and should NOT be used on food or drink containers. They should NOT be used by women who are pregnant or contemplating pregnancy. Keep these glazes out of the reach of children. If swallowed, promptly seek medical attention. These glazes may vary in appearance depending on the conditions of usage, firing cycle, glaze application thickness, and the underlying clay body. Always test your glazes!

SP151 .... Golden Halo.....	\$32.50	SP154 .... Wrought Iron .....	\$32.50
SP152 .... Moonlight.....	\$32.50	SP155 .... Brushed Bronze.....	\$32.50
SP153 .... Green Mirror .....	\$32.50	SP156 .... Green Patina.....	\$32.50



SP151



SP152



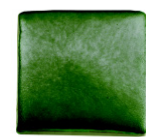
SP153



SP154



SP155



SP156